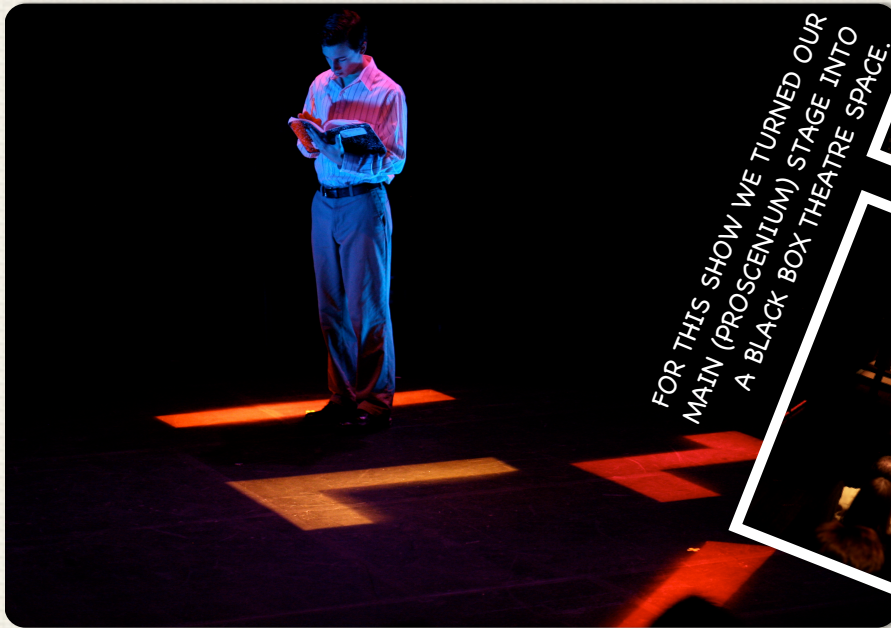


# FLOWERS FOR ALGERNON



FOR THIS SHOW WE TURNED OUR MAIN (PROSCENIUM) STAGE INTO A BLACK BOX THEATRE SPACE.



**The story:**

*Flowers for Algernon* tells the compelling story of mentally-challenged Charlie Gordon, the unknowing subject of a strange experiment that promises to surgically increase his intelligence to the level of genius. But will science prevail or fail? And who will ultimately pay the price?

**Director's Concept:**

*Flowers for Algernon* is ultimately about the **maze of a changing mind**...and the ethics altering a person's mind.

**Design:**

I chose for the **metaphor** of this show a **maze**, and worked it into the design as well as the physical staging of the production. From scene changes to lighting, to a unique original prologue I staged for the show, the maze metaphor was an outward expression of the show & character's inner life.



AN ORIGINAL PROLOGUE TO MUSIC

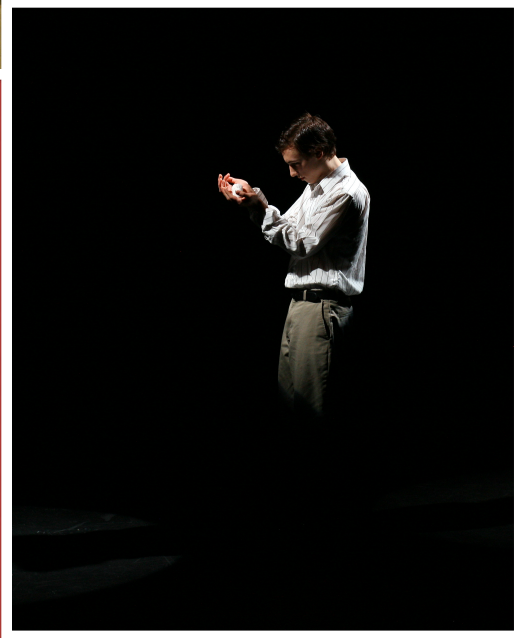
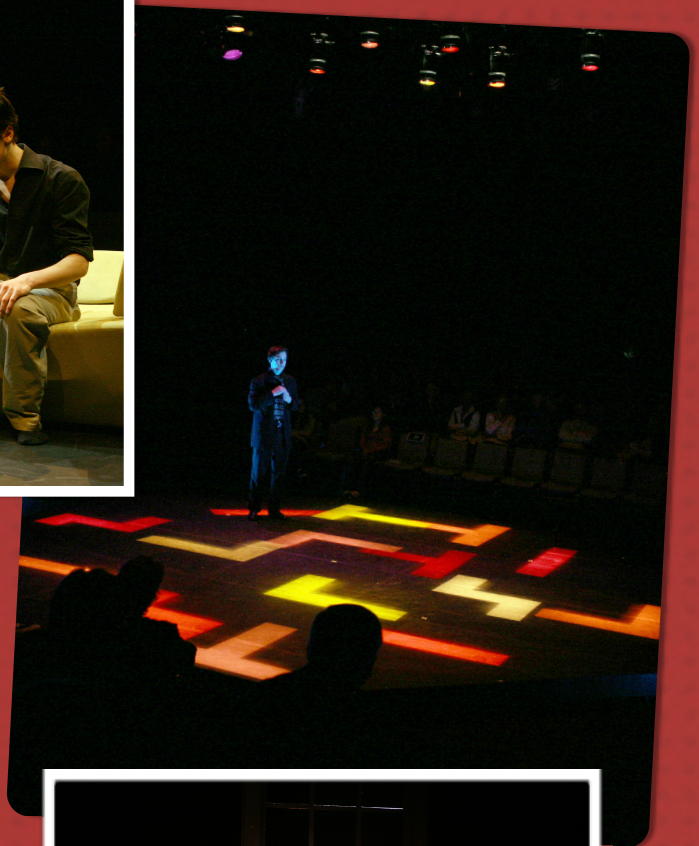


FOLLOWING SURGERY



CHARLIE'S THERAPY





A BLACK BOX THEATRE SPACE IS ONE THAT IS FLEXIBLE AND CAN BE CONFIGURED FOR THE NEEDS OF A SPECIFIC SHOW.

IN ORDER FOR THIS PARTICULAR SHOW TO HAVE THE MOST IMPACT, I CHOSE TO STAGE IT AS A BLACK BOX PRODUCTION INSTEAD OF A PROSCENIUM SHOW, ALLOWING ME TO USE THE STAGE FLOOR AS A DESIGN ELEMENT FOR THE SHOW'S METAPHOR, AND ALSO ALLOWING THE AUDIENCE TO EXPERIENCE THE CHARACTER'S JOURNEY IN AN INTIMATE WAY.